



# HEAVY DUTY 3.75" CHANNEL

System features Dog Bone Connectors

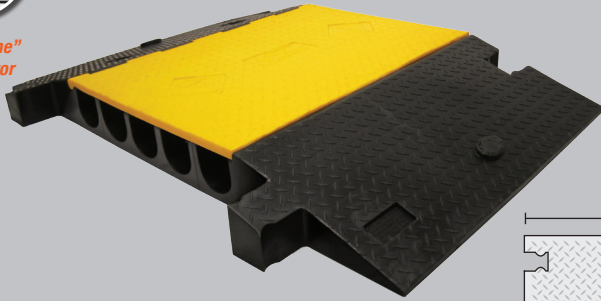
## FEATURES

- Protects cables and hoses up to 3.75" outside dia.
- The "original" cable protector
- Dog Bone Connectors to extend to any desired length
- Thick lid and base allow for high volume of traffic
- Hinged lid for easy cable placement
- Modular interlocking design

## YELLOW JACKET HEAVY DUTY 5-CHANNEL - 3.75 INCH



"Dog Bone" Connector

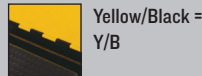


MODEL: YJ5-400

Protects cables and hoses up to 3.75" outside diameter

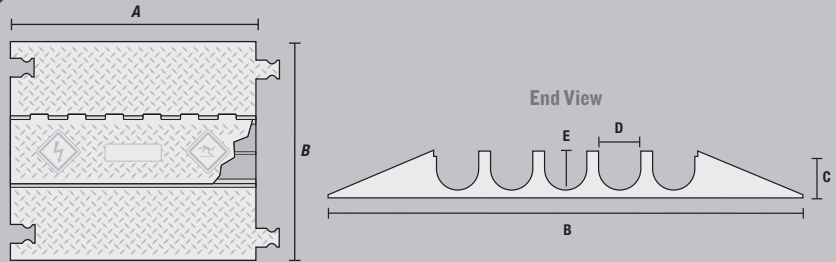
YELLOW JACKET® 5-CHANNEL CABLE PROTECTOR with hinged lid provides a safer crossing in high volume traffic areas while protecting valuable electrical cables and hose lines from damage. Modular interlocking design is ideal for use in industrial and heavy duty applications.

### Lid/Base Color Options



### LOAD CAPACITY

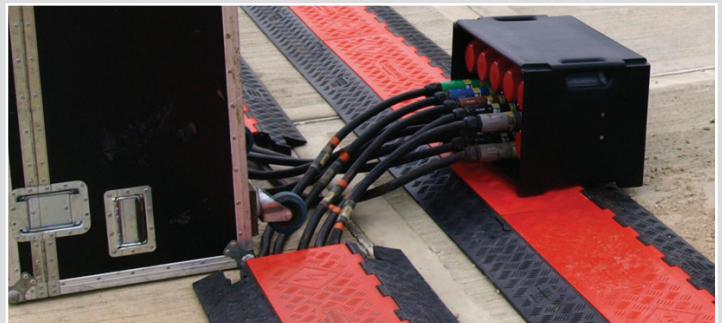
Max load tested at 70°F (21°C)  
 7,990 lb./Tire (3,624 kg)  
 15,980 lb./Axle (7,248 kg)



MODEL	A: LENGTH	B: WIDTH	C: HEIGHT	D: CHANNEL WIDTH	E: CHANNEL HEIGHT	WEIGHT
YJ5-400	35.75 in. (90.8 cm)	57.25 in. (145.4 cm)	5.125 in. (14.9 cm)	3.875 in. (9.84 cm)	3.75 in. (9.53 cm)	200 lb. (90.72 kg)



Yellow Jackets in use at the Naval Academy graduation



Guard Dogs in use at Silverston Speedway



Linebackers in use at a US Army camp