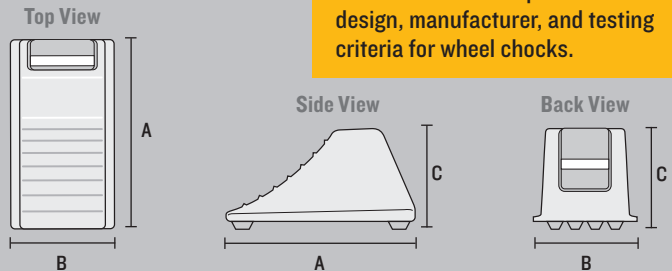


## HEAVY DUTY AT SERIES

MONSTER® HEAVY DUTY AT SERIES WHEEL CHOCKS are made with durable, lightweight polyurethane. Featuring replaceable aluminum base plates with posi-grip cleats or anti-slip rubber traction pads, the AT Series is ideal for underground mining equipment, fire fighting vehicles and large utility vehicles.

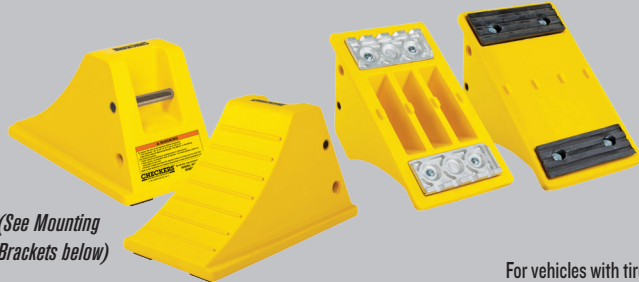
- NEW - Lighter weight with tough urethane construction
- NEW - Barcode imprinted on back of chock
- NEW - ANSI compliant color written guidelines on proper chocking procedures
- Complies with SAE-J348, NFPA 1901, 1906, and 1911 Standard
- Resistant to oils, fuels and solvents
- Recessed carrying handle on the backside of the chock
- Replaceable aluminum traction cleats or rubber pads
- Mounting hole for ropes, chains or brackets



**Meets NFPA & SAE Specifications**  
 NFPA 1901, 1906, and 1911 standard requires two or more wheel chocks to be mounted on fire apparatuses in readily accessible locations before being placed into service.  
 SAE-J348 standard presents design, manufacturer, and testing criteria for wheel chocks.

## HEAVY DUTY AT3514 SERIES

AT3514 Series Wheel Chocks comply with NFPA 1901, 1906, 1911, and meet SAE-J348 standard for up to 46 in. (116.8 cm) tire diameter.



(See Mounting Brackets below)

MODEL	BASE DESIGN	LENGTH	WIDTH	HEIGHT	WEIGHT
AT3514-AC-Y	Aluminum Cleat Cored Bottom	21 in. (53.3 cm)	11.25 in. (28.6 cm)	12.25 in. (31.1 cm)	16.5 lb. (7.5 kg)
AT3514-FBAC-Y	Aluminum Cleat Flat Bottom	21 in. (53.3 cm)	11.25 in. (28.6 cm)	12.25 in. (31.1 cm)	18.8 lb. (8.6 kg)
AT3514-RP-Y	Rubber Pad Cored Bottom	21 in. (53.3 cm)	11.25 in. (28.6 cm)	12.25 in. (31.1 cm)	16.1 lb. (7.3 kg)
AT3514-FBRP-Y	Rubber Pad Flat Bottom	21 in. (53.3 cm)	11.25 in. (28.6 cm)	12.25 in. (31.1 cm)	17.5 lb. (8.0 kg)
ATCLEAT-3514	Replacement Aluminum Cleat for cored or flat bottom				2.0 lb (.9 kg)
MCPAD20.25X2.5	Replacement Rubber Pad for cored or flat bottom				.9 lb (.4 kg)

For vehicles with tire sizes of 36" to 46" (91.4 cm to 116.8 cm) and gross vehicle operating weight up to 150,000 lb. (68,039 kg).

## HEAVY DUTY AT3512 SERIES

AT3512 Series Wheel Chocks comply with NFPA 1901, 1906, 1911, and meet SAE-J348 standard for up to 32 in. (81.3 cm) tire diameter.



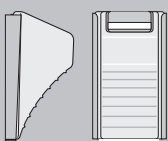
(See Mounting Brackets below)

MODEL	BASE DESIGN	LENGTH	WIDTH	HEIGHT	WEIGHT
AT3512-AC-Y	Aluminum Cleat Cored Bottom	15.5 in. (39.4 cm)	8.5 in. (21.6 cm)	8.25 in. (21.0 cm)	7.1 lb. (3.2 kg)
AT3512-FBAC-Y	Aluminum Cleat Flat Bottom	15.5 in. (39.4 cm)	8.5 in. (21.6 cm)	8.25 in. (21.0 cm)	7.5 lb. (3.4 kg)
AT3512-RP-Y	Rubber Pad Cored Bottom	15.5 in. (39.4 cm)	8.5 in. (21.6 cm)	8.25 in. (21.0 cm)	7.1 lb. (3.2 kg)
AT3512-FBRP-Y	Rubber Pad Flat Bottom	15.5 in. (39.4 cm)	8.5 in. (21.6 cm)	8.25 in. (21.0 cm)	7.5 lb. (3.4 kg)
ATCLEAT-3512	Replacement Aluminum Cleat for cored or flat bottom				.625 lb (.3 kg)
ATPAD-3512	Replacement Traction Pad for cored or flat bottom				2.0 lb (.9 kg)

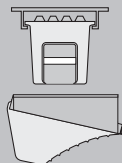
For vehicles with tire diameter of 28" to 38" (71.1 cm to 96.5 cm) and gross vehicle operating weight up to 80,000 lb. (36,287 kg).

## MOUNTING BRACKETS (Mounting Hardware NOT Included)

VERTICAL BRACKET



HORIZONTAL BRACKET



UNIVERSAL DUAL MOUNTING BRACKET



MODEL	DESCRIPTION	COATING	WEIGHT
AT2512VM	Vertical Mounting Bracket for 2512 Series 14" x 12" x 5.75"	Zinc Plated	3.2 lb. (1.5 kg)
AT2512HM	Horizontal Mounting Bracket for 2512 Series 16" x 11.13" x 6.25"	Zinc Plated	5.3 lb. (2.4 kg)
AT2514VM	Vertical Mounting Bracket for 2514 Series 21.25" x 12.25" x 1.63"	Zinc Plated	6.8 lb. (3.1 kg)
AT2514HM	Horizontal Mounting Bracket for 2514 Series 21.75" x 14.13" x 6.75"	Zinc Plated	8.0 lb. (3.7 kg)
AT2500	Universal Dual Mounting Bracket holds 2 each 2500 Series Wheel Chocks of any size. 26.26" (66.7 cm) Length Bracket Rod with 6" (15.2 cm) Square Mounting Plate.	Black Powder Coated Finish	13.5 lb. (6.2 kg)