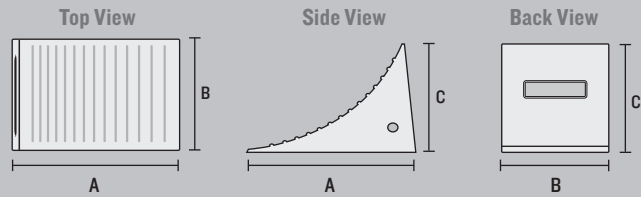


GENERAL PURPOSE - UC 1600 SERIES



- Durable urethane construction
- Oil and chemical resistant
- Recessed carrying handle
- Mounting hole for ropes or chains
- High visibility orange color
- Available in singles or pairs

UC1600 is certified for tire diameter 27" to 35" (68.6 cm to 88.9 cm) and gross vehicle operating weight up to 40,000 lb. (18,144 kg). Pairs attached with a 48" long piece of 5/8" Polyester rope.



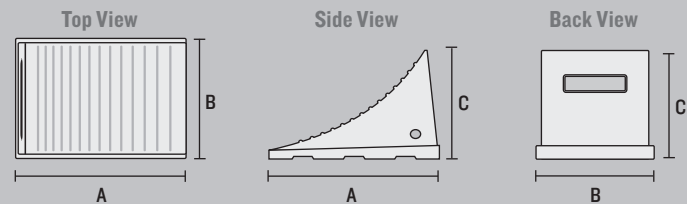
MODEL	A: LENGTH	B: WIDTH	C: HEIGHT	WEIGHT	COLOR
UC1600	11.25 in. (28.6 cm)	8 in. (20.3 cm)	8.25 in. (21.0 cm)	3.5 lb. (1.6 kg)	Orange
UC1600-P (PAIR OF CHOCKS*)	11.25 in. (28.6 cm)	8 in. (20.3 cm)	8.25 in. (21.0 cm)	7.5 lb. (3.4 kg) (PAIR OF CHOCKS)	Orange

GENERAL PURPOSE - UC 1700 SERIES



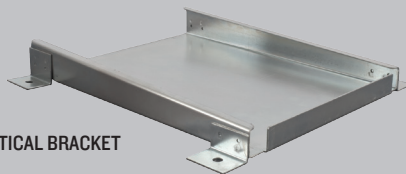
- Durable urethane construction
- Oil and chemical resistant
- Recessed carrying handle
- Mounting hole for ropes or chains
- Mounting brackets available
- High visibility orange color
- Available in singles or pairs

UC1700 is certified for tire diameter 27" to 35" (68.6 cm to 88.9 cm) and gross vehicle operating weight up to 30,000 lb. or 13,608 kg. Pairs attached with a 48" long piece of 5/8" Polyester rope.

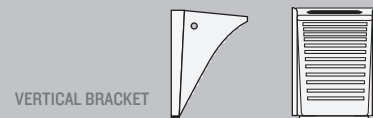


MODEL	A: LENGTH	B: WIDTH	C: HEIGHT	WEIGHT	COLOR
UC1700	8.5 in. (21.6 cm)	7.5 in. (19.1 cm)	6.25 in. (15.9 cm)	2.0 lb. (.91 kg)	Orange
UC1700-P (PAIR OF CHOCKS*)	8.5 in. (21.6 cm)	7.5 in. (19.1 cm)	6.25 in. (15.9 cm)	4.5 lb. (2 kg) (PAIR OF CHOCKS)	Orange

MOUNTING BRACKET FOR UC 1700 SERIES * (Mounting Hardware NOT Included)



VERTICAL BRACKET



VERTICAL BRACKET

MODEL	DESCRIPTION	WEIGHT
UC17VM	Vertical Mounting Bracket* for 1700 Series Wheel Chock. Zinc Plated. 10.5" x 9.25" x 1.5"	1.75 lb. (.8 kg)



Monster Chock model number UC1500-6 on mine support vehicle.



Monster MC Chocks used at NASA to hold the Atlas V launch vehicle. (Photo by NASA)