



FOR GENERAL PURPOSE GROUND VEHICLES

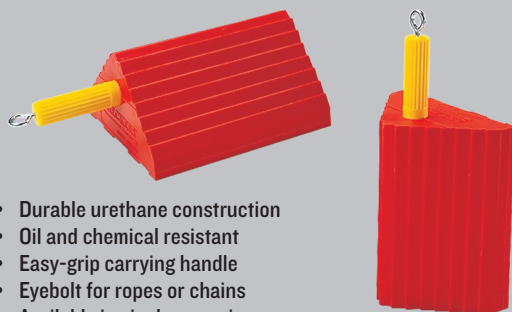
For tire diameters 27" to 48" (68.6 cm to 116.8 cm)

FEATURES

- Highly durable, lightweight construction
- For wheels with up to a 48" outside dia.
- Weather-resistant polyurethane construction
- Resistant to oils, fuels, and solvents
- UC chocks have been 3rd party tested, certified, and trusted by fleets globally

MONSTER® GENERAL PURPOSE UC SERIES WHEEL CHOCKS are manufactured with highly durable, lightweight polyurethane construction. These chocks are ideal for use with over-the-road trucks, trailers, pickups and utility vehicles.

GENERAL PURPOSE - UC1400 SERIES

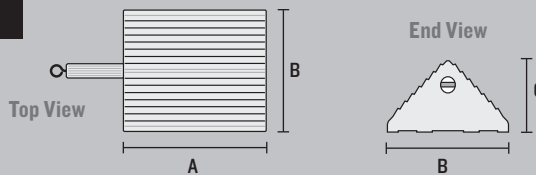


- Durable urethane construction
- Oil and chemical resistant
- Easy-grip carrying handle
- Eyebolt for ropes or chains
- Available in singles or pairs

UC1400-4.5 is certified for tire diameter 27" to 32" (68.6 cm to 81.3 cm) and gross vehicle operating weight up to 30,000 lb. (13,608 kg).

UC1400-6 is certified for tire diameter 27" to 32" (68.6 cm to 81.3 cm) and gross vehicle operating weight up to 60,000 lb. (27,216 kg).

* Pairs attached with a 48" long piece of 5/8" Polyester rope.



MODEL	A: LENGTH	B: WIDTH	C: HEIGHT	WEIGHT	COLOR
UC1400-4.5	10 in. (25.4 cm)	8.5 in. (21.6 cm)	5 in. (12.7 cm)	4.5 lb. (2 kg)	Orange
UC1400-4.5-P (PAIR OF CHOCKS*)	10 in. (25.4 cm)	8.5 in. (21.6 cm)	5 in. (12.7 cm)	9.5 lb. (4.3 kg) (PAIR OF CHOCKS)	Orange
UC1400-6	10 in. (25.4 cm)	8.5 in. (21.6 cm)	5 in. (12.7 cm)	6 lb. (2.7 kg)	Orange
UC1400-6-P (PAIR OF CHOCKS*)	10 in. (25.4 cm)	8.5 in. (21.6 cm)	5 in. (12.7 cm)	12.5 lb. (5.7 kg) (PAIR OF CHOCKS)	Orange

GENERAL PURPOSE - UC 1500 SERIES

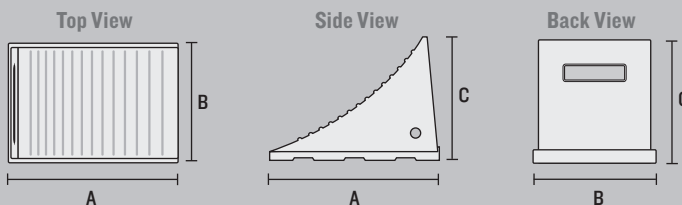


- Durable urethane construction
- Oil and chemical resistant
- Recessed carrying handle
- Mounting hole for ropes or chains
- Mounting brackets available
- High visibility orange color
- Available in singles or pairs

UC1500-4.5 is certified for tire diameter 32" to 46" (81.3 cm to 116.8 cm) and gross vehicle operating weight up to 50,000 lb. (22,680 kg).

UC1500-6 is certified for tire diameter 32" to 46" (81.3 cm to 116.8 cm) and gross vehicle operating weight up to 70,000 lb. (31,751 kg).

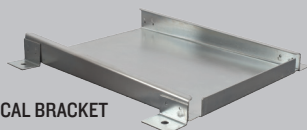
* Pairs attached with a 48" long piece of 5/8" Polyester rope.



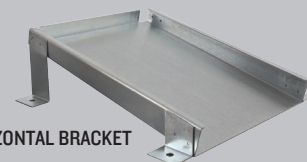
MODEL	A: LENGTH	B: WIDTH	C: HEIGHT	WEIGHT	COLOR
UC1500-4.5	11.5 in. (29.2 cm)	9 in. (22.9 cm)	8.5 in. (21.6 cm)	4.5 lb. (2 kg)	Orange
UC1500-4.5-P (PAIR OF CHOCKS*)	11.5 in. (29.2 cm)	9 in. (22.9 cm)	8.5 in. (21.6 cm)	9.5 lb. (4.3 kg) (PAIR OF CHOCKS)	Orange
UC1500-6	11.5 in. (29.2 cm)	9 in. (22.9 cm)	8.5 in. (21.6 cm)	6 lb. (2.7 kg)	Orange
UC1500-6-P (PAIR OF CHOCKS*)	11.5 in. (29.2 cm)	9 in. (22.9 cm)	8.5 in. (21.6 cm)	12.5 lb. (5.7 kg) (PAIR OF CHOCKS)	Orange

MOUNTING BRACKET FOR UC 1400 AND UC1500 SERIES

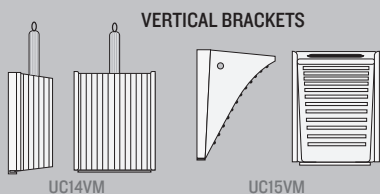
*(Mounting Hardware NOT Included)



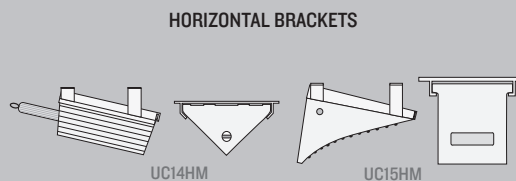
VERTICAL BRACKET



HORIZONTAL BRACKET



VERTICAL BRACKETS



HORIZONTAL BRACKETS

MODEL	DESCRIPTION	WEIGHT
UC15VM	Vertical Mounting Bracket* for 1500 Series Wheel Chock. Zinc Plated. 12.88" x 11.75" x 1.5"	2.5 lb. (1.1 kg)
UC15HM	Horizontal Underbody Mounting Bracket* for 1500 Series Wheel Chock. Zinc Plated. 12" x 11.5" x 4.25"	2.75 lb. (1.2 kg)
UC14VM	Vertical Mounting Bracket* for 1400 Series Wheel Chock. Zinc Plated. 11.88" x 10.5" x 2.13"	2.5 lb. (1.1 kg)
UC14HM	Horizontal Underbody Mounting Bracket* for 1400 Series Wheel Chock. Zinc Plated. 11.75" x 10.25" x 4.75"	2.75 lb. (1.2 kg)