



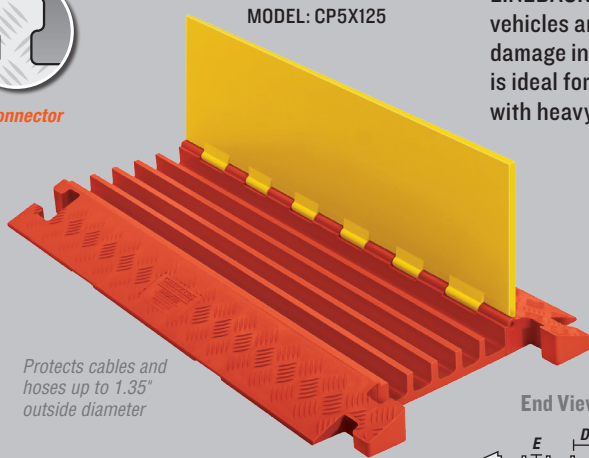
5-CHANNEL HEAVY DUTY

System features patented T-Connectors

- ## FEATURES
- Protects cables and hoses up to 1.35" outside dia.
 - Patented T-Connectors to extend to any length
 - Reinforced hinged lid for easy cable placement
 - All-weather polyurethane construction
 - Patented 5-bar tread surface for maximum traction
 - Easy to transport, setup, disassemble, and store

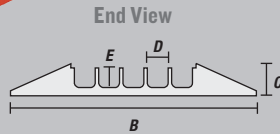


T-Connector

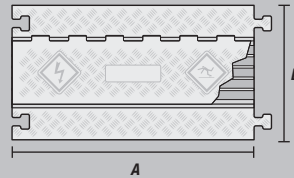


MODEL: CP5X125

Protects cables and hoses up to 1.35" outside diameter



End View



Lid/Base Color Options



LOAD CAPACITY

Max load tested at 70°F (21°C)

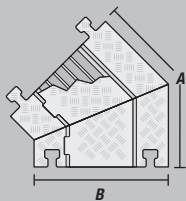
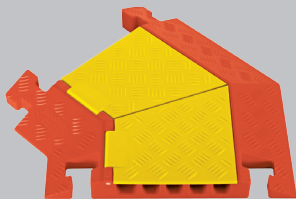
20,150 lb./Tire (9,140 kg)
40,300 lb./Axle (18,280 kg)

U.S. Patent No: D415,112

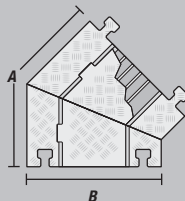
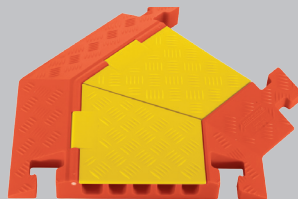
MODEL	A: LENGTH	B: WIDTH	C: HEIGHT	D: CHANNEL WIDTH	E: CHANNEL HEIGHT	WEIGHT
CP5X125	36 in. (91.4 cm)	20 in. (50.8 cm)	2.31 in. (5.72 cm)	1.35 in. (3.43 cm)	1.35 in. (3.43 cm)	25 lb. (11.3 kg)

ACCESSORIES for Linebacker 5-Channel Heavy Duty Cable Protectors

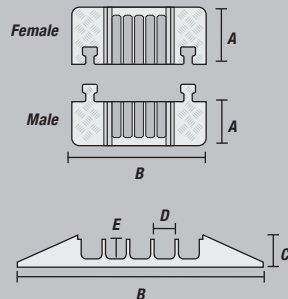
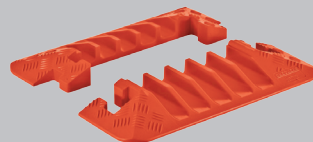
45° LEFT TURN
MODEL: CPT5X125-L



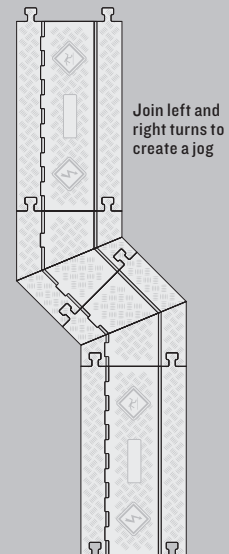
45° RIGHT TURN
MODEL: CPT5X125-R



END CAPS (Pair Only)
MODEL: CPEC5X125



End Caps Color: O = Orange



Join left and right turns to create a jog

Turns Color: Y/O = Yellow Lid with Orange Ramps

	MODEL	A: LENGTH	B: WIDTH	C: HEIGHT	D: CHANNEL WIDTH	E: CHANNEL HEIGHT	WEIGHT
45° LEFT TURN	CPT5X125-L	25 in. (63.5 cm)	20 in. (50.8 cm)	2.31 in. (5.72 cm)	1.35 in. (3.43 cm)	1.35 in. (3.43 cm)	13 lb. (5.9 kg)
45° RIGHT TURN	CPT5X125-R	25 in. (63.5 cm)	20 in. (50.8 cm)	2.31 in. (5.72 cm)	1.35 in. (3.43 cm)	1.35 in. (3.43 cm)	13 lb. (5.9 kg)
END CAPS (PAIR)	CPEC5X125	Female: 7.5 in. (19 cm)	20 in. (50.8 cm)	2.31 in. (5.72 cm)	1.35 in. (3.43 cm)	1.35 in. (3.43 cm)	3.5 lb. (1.6 kg)
		Male: 5.25 in. (13.3 cm)	20 in. (50.8 cm)	2.31 in. (5.72 cm)	1.35 in. (3.43 cm)	1.35 in. (3.43 cm)	3.5 lb. (1.6 kg)