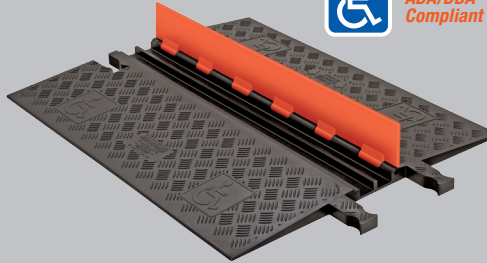
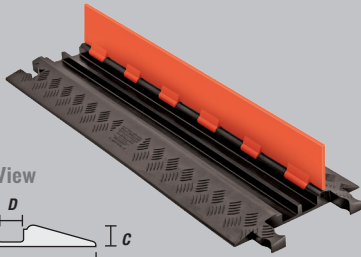


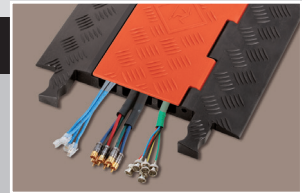
## LOW PROFILE 2-CHANNEL General Purpose Cable Protectors



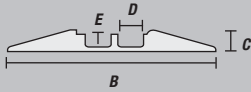
"Dog Bone" Connector



ADA/DDA Compliant



End View



### STANDARD LOAD CAPACITY

Max load tested at 70°F (21°C)

13,000 lb./Tire (5,896 kg)  
26,000 lb./Axle (11,792 kg)

### ADA/DDA LOAD CAPACITY

Max load tested at 70°F (21°C)

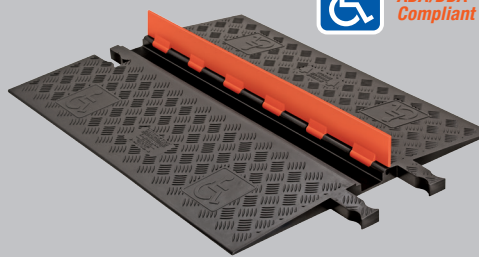
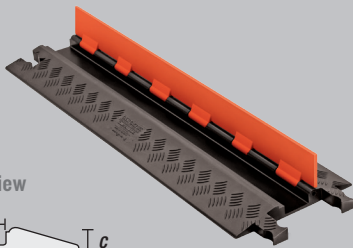
23,000 lb./Tire (10,432 kg)  
46,000 lb./Axle (20,864 kg)

	MODEL	A: LENGTH	B: WIDTH	C: HEIGHT	D: CHANNEL WIDTH	E: CHANNEL HEIGHT	WEIGHT
STANDARD RAMPS	GD2X75-ST	36 in. (91.44 cm)	11.94 in. (30.3 cm)	1.25 in. (3.18 cm)	1.5 in. (3.8 cm)	.75 in. (1.9 cm)	9.05 lb. (4.1 kg)
ADA/DDA RAMPS	GD2X75	36 in. (91.44 cm)	28.38 in. (72.09 cm)	1.25 in. (3.18 cm)	1.5 in. (3.8 cm)	.75 in. (1.9 cm)	22.85 lb. (10.36 kg)

## LOW PROFILE 1-CHANNEL General Purpose Cable Protectors



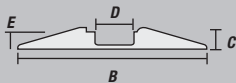
"Dog Bone" Connector



ADA/DDA Compliant



End View



### STANDARD LOAD CAPACITY

Max load tested at 70°F (21°C)

13,000 lb./Tire (5,896 kg)  
26,000 lb./Axle (11,792 kg)

### ADA/DDA LOAD CAPACITY

Max load tested at 70°F (21°C)

23,000 lb./Tire (10,432 kg)  
46,000 lb./Axle (20,864 kg)

	MODEL	A: LENGTH	B: WIDTH	C: HEIGHT	D: CHANNEL WIDTH	E: CHANNEL HEIGHT	WEIGHT
STANDARD RAMPS	GD1X75-ST	36 in. (91.44 cm)	10.81 in. (27.46 cm)	1.25 in. (3.18 cm)	2.25 in. (5.72 cm)	.75 in. (1.9 cm)	7.8 lb. (3.54 kg)
ADA/DDA RAMPS	GD1X75	36 in. (91.44 cm)	27.25 in. (69.22 cm)	1.25 in. (3.18 cm)	2.25 in. (5.72 cm)	.75 in. (1.9 cm)	21.1 lb. (9.55 kg)

## ANTI-SLIP TRACTION KITS for Guard Dog Low Profile Standard Ramp Models

MODEL	DESCRIPTION	WEIGHT
CPRPKIT.75-20	Anti-Slip Rubber Pad Kit for all Guard Dog Low Profile Protectors with Standard Ramps (includes 20 anti-slip rubber pads)	.11 lb. (.05 kg)
CPGLUE	1/2 oz. Bottle of Checkers' Clear Super Glue (best if kept refrigerated). Use for permanent application of Anti-Slip Rubber Pads	.07 lb. (.032 kg)
CPCARPETKIT-3	Carpet Kit with VELCRO® Brand Fasteners for all Guard Dog Low Profile Protectors with Standard Ramps (includes two 37" x .25" Black Traction Strips and a 1/2 oz. Bottle of Checkers' Clear Super Glue)	.09 lb. (.041 kg)

