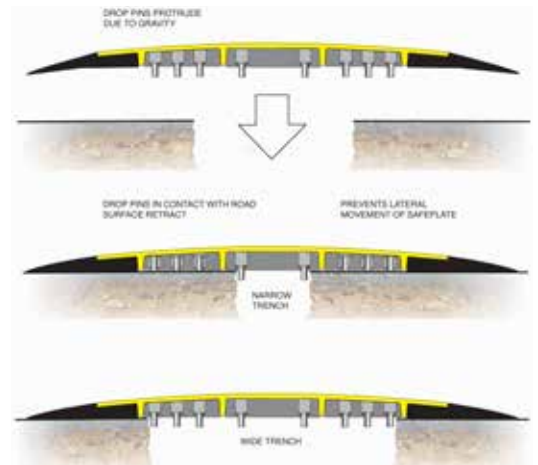




15/5 Road Plate

The Oxford Road Plate is a modular system comprising of individual units linked together. There is no need to use expensive specialist lifting equipment as the road plate can be installed in minutes with a two man lift.

The Oxford Road Plate is the ideal substitution to the steel plate, giving you more flexibility and security.



FEATURES

- Easy to install modular system, no special lift equipment needed
 - Two man lift for installation, 97 lbs. per section
- The innovative flexible edge dampens any unwanted sounds making the product ideal for use in residential areas
- Tested to vehicle weights of 96,800 lbs
 - Single wheel load, 14,520 lbs. at 30" trench width
- Features "Drop Pins" that increase stability
 - Pins protrude into trench preventing lateral movement of plate
- End sections must be bolted (we recommend a M16 bolt suitable for concrete or tarmac)

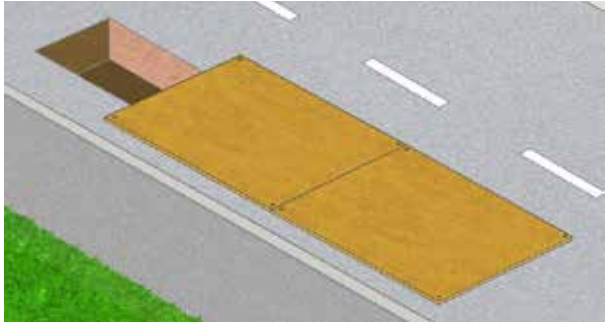
ADVANTAGES

- Long lasting product, no rust or corrosion, polymer material
- No incentive for theft
- Anti-slip surface provides a secure pedestrian access
- No need for expensive specialist lifting equipment
- Safer installation



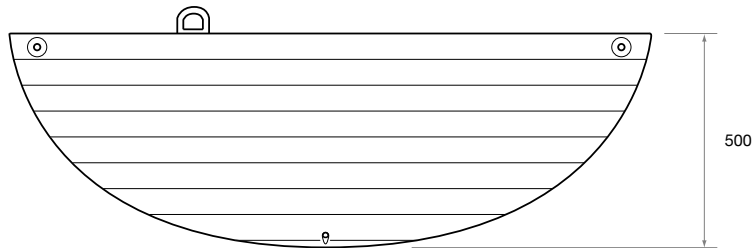
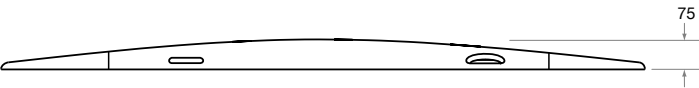
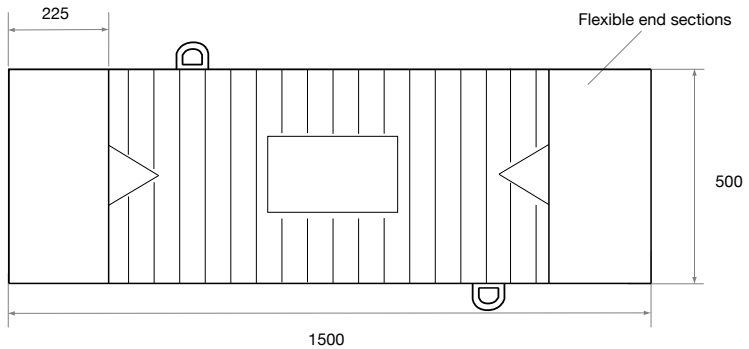
Disadvantages of Steel Plates:

- Heavy, difficult to manoeuvre
- Special lifting equipment required
- Does not always lie flat on road surface



SPECIFICATIONS

Product No	0830	0814
Length, end to end	59 in	59 in
Width	19.7 in	19.7 in
Weight	96.8 lbs	50 lbs
Number / pallet	20	20
Color	Yellow and Black	



END PLATE



INSTALLATION

IMPORTANT – READ IMMEDIATELY

Oxford Road Plate Fixing Instructions For Temporary Installations

Safety Guidelines

- Maximum trench width 700mm
- Maximum loading 6000kg per road plate – this is the wheel loading for a 44 tonne vehicle
- Each Oxford Road Plate weighs 35kg and should be lifted by two people
- Check condition of each Oxford Road Plate prior to installation. Do not use if any damage is identified.

Equipment Required

- Industrial Power Drill
- Lump Hammer
- Fixing Kit (not supplied) containing:
 - 22mm drill bit
 - M12x140mm” driver
 - Torque Wrench
 - 4 x Toge TSMB 22x155 fixing bolts (per road plate)
 - Weather Seal bitumen mastic



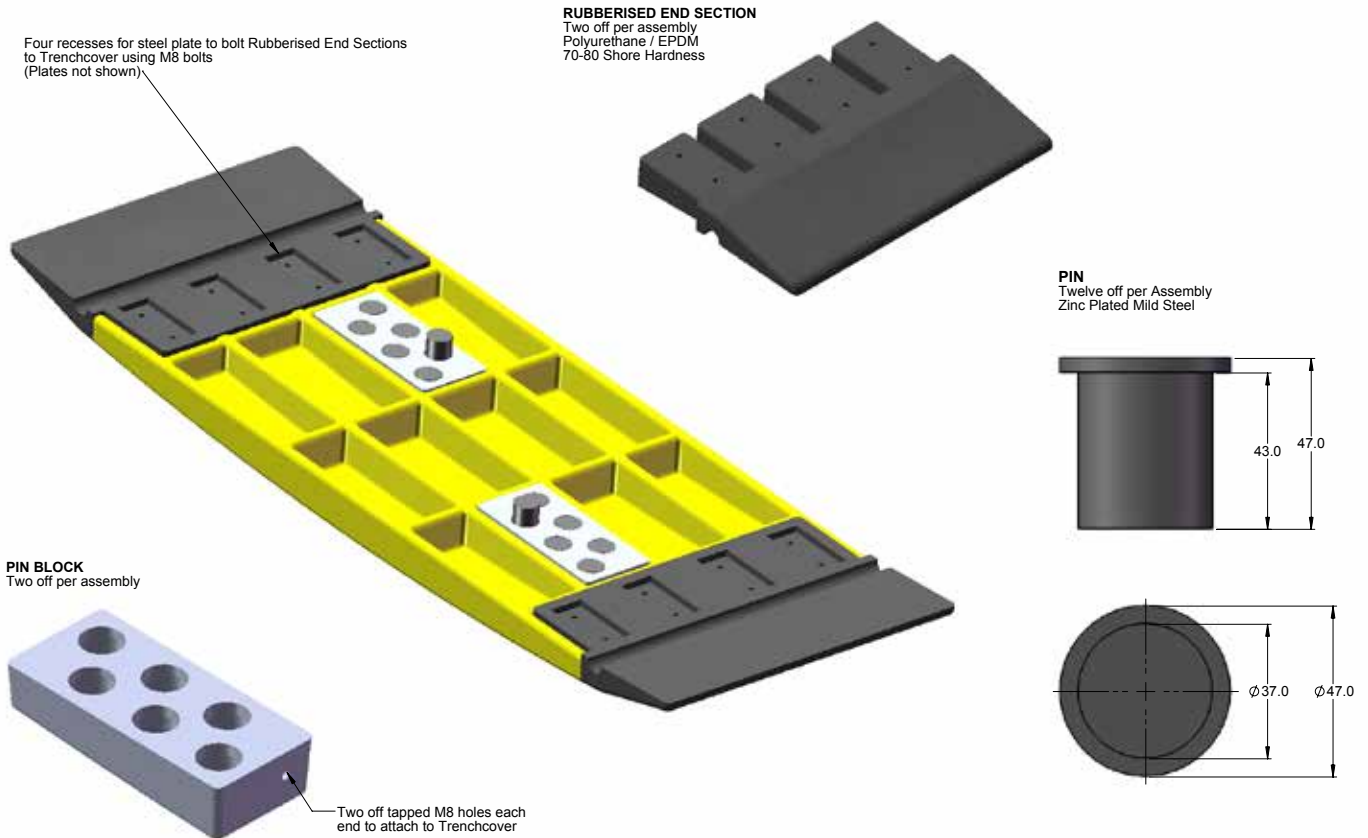
Installation

1. Align Oxford Road Plates centrally over trench - interlocking nature of road plates will ensure that a neat straight row is achieved.
2. Once the Oxford Road Plates are arranged satisfactorily, drill pilot holes through each of the fixing holes in every second Oxford Road Plate, using the 22 mm masonry drill bit to a depth of 160mm. (Both end sections must be bolted down).
3. Insert the fixing bolt and using a torque wrench (If available) or ratchet tighten the bolts. A value of (160nm) is approximately hand tight.



Dismantling

1. When the temporary installation is complete, remove the fixing bolts from the Oxford Road Plates.
2. Starting from one end, lift the Oxford Road Plate to disengage the interlocking mechanism.
3. Use Weather Seal bitumen mastic to fill hole.



Do not scale
All dimensions in millimetres

